



About the Police Liaison Unit

The Police Liaison Unit works for and reports to the four Chief Constables and Police and Crime Commissioners in Wales. The team engages with the UK and Welsh Governments and other strategic stakeholders, such as the Secretary of State for Wales's Office (SoSW), Ministry of Justice, National Police Chiefs Council, Association of Police and Crime Commissioners, His Majesty's Inspectorate of Constabularies Fire and Rescue Services and other sectors; to influence and negotiate positive outcomes for policing and community safety in Wales. It also forges links to and advises on policy developments affecting policing at UK and Welsh Government level to support operational service delivery on the ground in Wales. The principal goal for the Unit is to secure the best possible outcomes for Policing in Wales through active partnerships with all stakeholders.

The Police Liaison Unit is funded by the four Chief Constables and four Police and Crime Commissioners in Wales. The Head of the Police Liaison Unit is directly accountable to the Chair of the Policing in Wales Group and the Chair of the Welsh Chief Officers Group. They set annual objectives for the Head of Unit from which a Forward Work Programme is developed for scrutiny by the Policing in Wales Group. The Unit has links to the Crime and Justice Team in Welsh Government but serving a non-devolved function is not responsible or accountable to officials in that team.

Why have a Police Liaison Unit?

Many of the areas Welsh Government are responsible for cross over into policing such as

- Health and Social Services – Safeguarding the Vulnerable, Mental Health, Substance Misuse
- Education – Previous joint funding for Wales Police Schools Programme withdrawn from March 31st 2024
- Housing, homelessness
- Crime and Justice – Community Safety; Fire and Rescue; Civil Contingencies
- Major Cross Cutting Issues
- Transport Policy – 20mph legislation, 50mph Low Emission Zones enforcement
- Funding for over 300 Police Community Support Officers
- Public Service Boards
- Area Planning Boards
- Regional Partnership Boards

Therefore it is important that a positive and ongoing engagement is maintained to strengthen relationships. The PLU are ambassadors for the four forces and Commissioners offering

advice and expertise, facilitating consultations and providing a professional voice on policing issues. This helps to minimise the burden on the four Welsh forces, as well as highlighting new legislation being looked at and making sure policing has the opportunity to influence change prior to implementation.

What do the Police Liaison Unit do?

The PLU are responsible for organising the Welsh Chief Officers Group, Welsh Chief Officers Group for Mental Health and [Policing Partnership Board for Wales](#), as well as facilitating various meetings within Welsh Government and links to the Wales Collaboration Agenda. The PLU also reports into the quarterly meeting of the Policing in Wales Group.

Do the PLU just work with the Welsh Government?

No. The PLU has regular meetings and engagement with other key partners including the Home Office, Ministry of Justice, Welsh Local Government Association, Safer Communities Network and the Violence Prevention Unit, to name but a few. The team will work with a wide variety of other bodies and individuals according to work that is ongoing at any given time.

Who provides the PLU's main link in Welsh Government?

The PLU works closely with the Crime and Justice Team in Local Government, specifically the Deputy Director in that team. Aside from this, the Head of PLU has regular structured engagement with Directors and Deputy Directors across all areas of Government.

How does the PLU contribute to answering questions in the Senedd?

The PLU is frequently asked to contribute to answering oral or written questions raised by Senedd Members. There is a clear and agreed process for this, the PLU linking with designated points of contact in the four forces in Wales to provide concise and meaningful responses, wherever appropriate.

How many people are there in the unit?

The unit is made up of ten members of staff, although some of these are seconded for specific periods to work on time limited pieces of work. Three of the roles are funded either fully or in part by Welsh Government and one is half funded by the Association of Police and Crime Commissioners.

Where is the unit based?

The PLU has previously had a designated base within Welsh Government Offices. However, since the onset of the Covid 19 pandemic, all team members have worked flexibly and with agility from either home or work bases local to them. This is likely to remain the default position moving forward, with the team meeting in person occasionally.

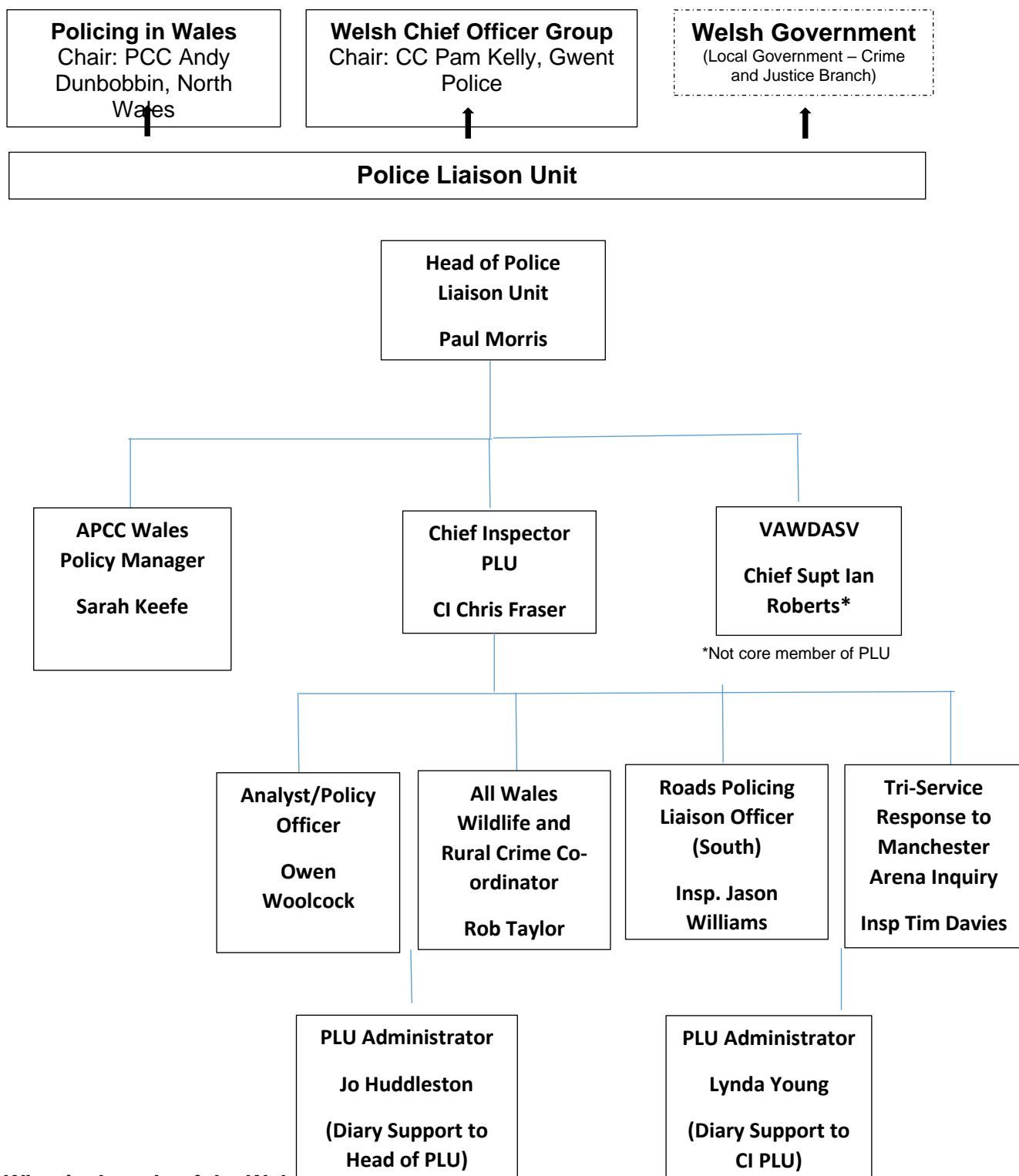
Are the PLU Welsh Government Staff?

No the PLU are all police staff, funded by all four Welsh forces other than roles which are joint funded. All PLU staff currently have Welsh Government security clearance enabling them to access Welsh Government buildings and use Welsh Government equipment and network systems.

How is the unit structured?

The Police Liaison Unit answers to the four Welsh Police and Crime Commissioners and Chief Constables with the structure as follows:

Policing Partnership Board for Wales
Chaired by First Minister for Wales or Minister for Social Justice



What is the role of the Welsh Government?

Wales has its own government, making policies and laws for our country and the Welsh Government responsibilities include:

- education
- health

- local government
- transport
- planning
- economic development
- social services
- culture
- Welsh language
- environment
- agriculture and rural affairs

Welsh Government make decisions on matters regarding these areas, for Wales as a whole, developing policies and implementing them as well as proposing Welsh laws (Senedd Bills)

What is Devolution?

Devolution is a process of decentralising government and giving more power to the local administration.

Welsh Government have the following devolved powers

Agriculture, fisheries, forestry and rural development

Ancient monuments and historic buildings

Culture

Economic development

Education and training

Environment

Fire and rescue services

Food

Health and health services

Highways and transport

Housing

Local Government

Public administration

Social welfare

Sport and recreation

Tourism

Town and country planning

Water and flood defences

Welsh language

What's the difference between Senedd Cymru, Welsh Parliament and National Assembly for Wales?

They are all the same. Created in 1999 until May 2020 the Senedd was known as the National Assembly for Wales, now known as Senedd Cymru which is Welsh for Welsh Parliament.

Difference between Senedd Cymru (Welsh Parliament) and Welsh Government

The Senedd Cymru is the democratically elected body that represents the interests of Wales and its people, makes laws for Wales, agrees Welsh taxes and holds the Welsh Government to account.

The Llywydd (Presiding Officers) is the highest authority in the Senedd and chairs Plenary, the meeting of all 60 Members of the Senedd, remaining politically impartial at all times.

The Welsh Government is the devolved government for Wales. It is formed after an election and is made up from a single party or a coalition of the political parties represented in the Senedd. It delivers policies and laws on devolved subjects such as health, education, public services and the environment.

The First Minister of Wales is the leader of the Welsh Government and is appointed by HM the King following nomination by Senedd Members.

What are Members of the Senedd or MSs

Senedd Cymru is the Welsh Parliament and is composed of sixty members known as Members of the Senedd or MSs. Forty are chosen to represent an individual Senedd constituency and twenty are elected to represent the five electoral regions of Wales.

Each person in Wales is represented by five MSs, one for their constituency (the local area in which they live) and other four covering their region. Wales's five electoral regions are Mid and West Wales, North Wales, South Wales Central, South Wales East and South Wales West. Please click the link to see the list of [Members of the Senedd](#)

Where can someone find out more about the unit?

Head of Police Liaison Unit
Paul Morris
PLU@gov.wales

Who's who in the Police Liaison Unit

Head of the Police Liaison Unit

Paul Morris

Work Streams

As the Head of the PLU oversees all PLU matters linking in with Welsh Government, Chief Officers, Commissioners, Home Office, Violence Prevention Unit, Welsh Local Government, Ministry of Justice and Wales Office and various other organisations. Directly supports Chief Constables and Police and Crime Commissioners in securing the best outcomes for Policing in Wales. The role provides leadership and direction across all portfolio areas within the Unit, reporting quarterly to the Welsh Chief Officers Group and Policing in Wales. The Head of Unit is the first point of contact for Welsh Government officials in relation to policy issues, written and oral Senedd questions and consultation on legislation from either UK or Welsh Governments. The Head of Unit is responsible for raising the profile of the Police Liaison Unit and is accountable for all staffing and budgetary issues

C/Inspector

Chris Fraser

General duties

The Chief Inspector of the PLU deputises for the Head of the PLU where necessary and holds a portfolio including matters relating to Mental Health, Suicide prevention and bereavement training, refugees / asylum seekers and Child Centred Policing, Facilitating and

supporting meetings between PCCs, Chief Officer Teams and Welsh Government. Creates long term relationships with the Home Office Advisory Group, Crime & Justice directorate, Violence Prevention Unit, HMICFRS and Community Safety Network.

T/CS VAWDASV

Ian Roberts

General duties

Ian is not part of the PLU structure but is an 'associate member', which ensures join up with PLU planning. He has been seconded to Policing in Wales as strategic lead for Violence Against Women, Domestic Abuse and Sexual Violence (VAWDASV/VAWG). He is also strategic lead for the Anti Racism portfolio. Both portfolios now have a Policing in Wales Task Force, led by CC Blakeman and CC Kelly respectively. This aims to ensure shared learning, consistent and cohesive approaches to key issues and exploring collaboration opportunities. Ian also represents Policing in Wales within strategic partnerships. For VAWDASV he is a member of the Blueprint and leads a number of strands of work. For the Anti-Racism portfolio he is a member of the Criminal Justice Board for Wales Anti-Racism Task Force, and leads the work on CJ data.

Roads Policing Inspector

Insp Jason Williams

General duties

Support Transport Chief Office Lead, link between Welsh Government Roads Policy and Policing with respect to road safety.

Liaison between the air quality team within Welsh government and key project lead for the Average speed camera infrastructure which were handed over to forces from April 2021 to carry out engagement and enforcement on behalf of Welsh government to promote the improvement of air quality in 5 key areas across Wales.

Jason leads on 20mph enforcement and engagement in a gold silver bronze structure. As bronze Jason works with organizations and all 4 Welsh police forces to deliver the strategy set by the gold lead ACC Mark Travis SWP. Jason is delivering on operation Ugain that supports Welsh Government as Wales transits through the legislation changes and challenges surrounding 20mph road speeds.

Jason sits as bronze to Gosafe strategic lead Teresa Ciano under the wider Gosafe partnership. Working at an operational level to deliver the road safety strategy for policing across Wales. Driving change within the teams to move further into engagement and to assist the local and highway authorities in working with Gosafe to enforce and engage in areas that require the attention of the team in a competitive and demanding area of work.

Tri-Service Response to Manchester Arena Inquiry

Insp Tim Davies

General duties

I represent the Police Service on an All-Wales basis, chairing the Tri Service Blue Light and Wesh Government group, working towards implementing the recommendations that came out of the Manchester Arena Inquiry.

I Lead and Coordinate the policing response to the recommendations, whilst working with the other Blue Light services to ensure a cooperative approach in finding effective strategic and operational responses to the multi-agency recommendations.

I also work closely with the Resilience Unit within WG as well as other WG departments such as Health and Education, with regards to the MAI recommendations pertaining to their business areas.

Business Manager, Policing in Wales

Asif Asfar

General duties

I lead the co-ordination and management of matters relating to Policing in Wales on an All-Wales level through provision of dedicated support to the Chair of PiW and working with the PCCs, CCs, CEXs, CFOs, Treasurers and the PLU. I co-ordinate and manage content for discussion and decision through an agreed way of working, delivered flexibly through a Forward Programme of Work to enable collaborative working. I facilitate progress on agreed actions, evidence activity on an all-Wales basis, evidence transparency of decision-making and actions.

APCC Wales Policy Manager

Sarah Keefe

General duties

To work with the four Police and Crime Commissioner's, and their teams, in ensuring all policy and strategy-based considerations are represented broadly across the Association of Police and Crime Commissioners (APCC).

Fundamentally linked to this responsibility is to ensure that Wales, Welsh Commissioners, and the approach adopted to preventing and tackling crime, is widely recognised across the broader UK policy landscape.

To work with the APCC and four Welsh Commissioners to ensure that UK specific established duties for policing, that are passed down to police forces, are aligned with the devolved processes passed down by the Welsh Assembly, in Wales – and vice versa.

Highlight and share best practice between Welsh PCCs and the APCC.

Escalate policy and practice concerns across OPCC's, to the APCC, in order to support effect positive change, reflective of the needs of Welsh communities.

Work with Police and Crime Commissioners, and their teams to support in identifying the collective strategic objectives, subsequently working with the APCC to ensure the value of the work undertaken in Wales is recognised and appreciated.

Support APCC colleagues to ensure effective links are made across all four PCC offices in Wales. This will enable a cohesive approach to sharing best practice, collaborative working and addressing any challenges and barriers across all APCC portfolio areas.

Fundamentally, the role will build an effective link between the work of the portfolio priorities covered by the APCC, and the practice across Wales and Welsh forces. In doing this, we will work collaboratively with a broader spectrum of partners to deliver effective and efficient Criminal Justice processes and systems.

Priority areas will take precedence at various points as part of this role, and at present, areas covered include homelessness and rough sleeping, substance misuse / Drug Strategy, children and young people, domestic homicide reviews, Community Safety Partnerships and Anti-Social Behaviour, as well as the upcoming implementation of the Victims and Prisoners Bill.

All Wales Wildlife and Rural Crime Co-ordinator

Rob Taylor

General Duties

- Development of and implementation of the All-Wales Strategy for Wildlife and Rural Crime.

- Development of a consistent approach and direction to the work of rural policing teams across the four force areas in Wales and coordination of the 4 policing areas;
- Raising the profile of and response to rural & wildlife crime across Wales by representation at a UK level.
- Conducting training / social media / publicity and interviews.
- Monitoring of the Welsh Rural Strategy 2023-2025 and its jigsaw with the NPCC UK strategy (member of 8 UK strategic groups).
- Chair of 6 Welsh Rural Strategy working groups and Secretary
- NPCC UK lead for livestock attacks by dogs and the progression of a new law through Parliament
- Specialist ministerial knowledge & advice on wildlife & rural crime matters
- OPCC UK (Rural Crime Network) wildlife & rural crime specialist adviser
- Organisation and presentation of the annual Welsh Rural Crime Conference
- Partnership working with NGOs and public organisations.
- HLG adviser for rural matters in Wales

Analyst/Policy Officer

Owen Woolcock

General duties

To provide analytical and policy support to the PLU and Policing in Wales more generally; assisting in the police response to emerging legislation including speed reduction measures, Violence Against Women, Domestic Abuse and Sexual Violence, the Children's Act and mental health.

Horizon scan and respond to consultations from a Policing in Wales perspective.

Help support the APCC policy manager in running the All Wales Policy Group.

Build and Maintain All Wales Dashboards on Power Bi, build and maintain the structure and systems behind these and provide training for usage as and when required.

Administrator

Jo Huddleston

Work Stream

Secretariat Welsh Chief Officers Group

Secretariat Policing, Partnership Board for Wales

Diary Management for Head of PLU

All administration duties

Administrator

Lynda Young

Work Stream

Secretariat for Mental Health Group

Children in Police Custody Monthly Data

PCSO Communications and monitoring

Diary Management for Deputy Head

All administration duties

Useful links

[Welsh Government Site](#)

[Welsh Government Consultations](#)

[Welsh Government Announcements](#)

[Welsh Government Community Support Officers](#)

[Police & Partnership Board for Wales](#)

[Senedd Cymru – Welsh Parliament](#)

[Member of the Senedd](#)

[Senedd Cymru – Plenary Page](#)

[Senedd Cymru TV](#)

[Cross Party Group on Policing](#)

[Police & Crime Commissioner Dyfed Powys](#)

[Dyfed Powys Police](#)

[Police & Crime Commissioner Gwent](#)

[Gwent Police](#)

[Police & Crime Commissioner North Wales](#)

[North Wales Police](#)

[Police & Crime Commissioner South Wales](#)

[South Wales Police](#)

[College of Policing](#)

[Home Office](#)